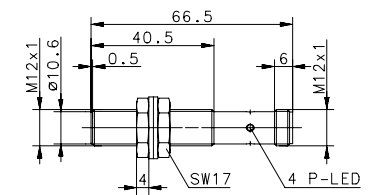
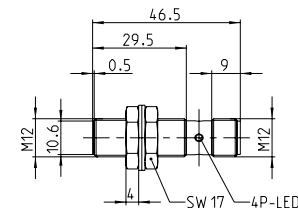
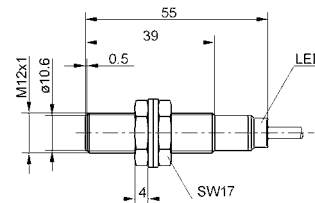
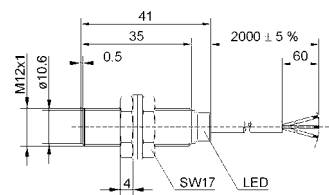


INDUCTIVE SENSORS Type M12



Type	M12	M12	M12	M12
Enclosure material	CuZn39Pb3	CuZn39Pb3	CuZn39Pb3	CuZn39Pb3
Type of installation	flush	flush	flush	flush
Nominal sensing distance	2 mm	2 mm	2 mm	2 mm
Type of connection	Cable 2 m	Cable 2 m	Connector M12	Connector M12
Special feature	Short type	Standard type	Short type	Standard type
PNP DC NO contact	6532903001 KIB-M12PS/002-KL2VI	6532903002 KIB-M12PS/002-KL2I	6532943001 KIB-M12PS/002-KLS12VI	6532943002 KIB-M12PS/002-KLS12I
PNP DC NC contact	6532703001 KIB-M12PÖ/002-KL2VI	6532703002 KIB-M12PÖ/002-KL2I	6532743001 KIB-M12PÖ/002-KLS12VI	6532743002 KIB-M12PÖ/002-KLS12I
NPN DC NO contact	6532303001 KIB-M12NS/002-KL2V	6532303002 KIB-M12NS/002-KL2	6532343001 KIB-M12NS/002-KLS12V	6532343002 KIB-M12NS/002-KLS12
NPN DC NC contact	6532103001 KIB-M12NÖ/002-KL2V	6532103002 KIB-M12NÖ/002-KL2	6532143001 KIB-M12NÖ/002-KLS12V	6532143002 KIB-M12NÖ/002-KLS12
Technical data				
Rated operating voltage range	U_B 10–30 VDC	10–30 VDC	10–30 VDC	10–30 VDC
Rated operating current	I_e ≤ 200 mA	≤ 200 mA	≤ 200 mA	≤ 200 mA
Max. switching voltage	F 800 Hz	800 Hz	800 Hz	800 Hz
Short circuit-protection	cyclic	cyclic	cyclic	cyclic
Function/operating voltage indicator	LED/–	LED/–	LED/–	LED/–
Mechanical data				
Ambient temperature (min/max)	–25°C/+70°C	–25°C/+70°C	–25°C/+70°C	–25°C/+70°C
Protection class in accordance with IEC 529, EN 60529	IP67	IP67	IP67	IP67
Connection	3 x 0.14 mm ²	3 x 0.14 mm ²	M12 x 1	M12 x 1
Approvals				

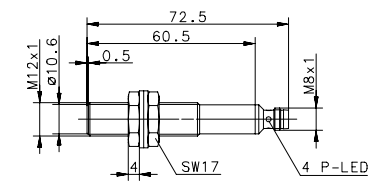
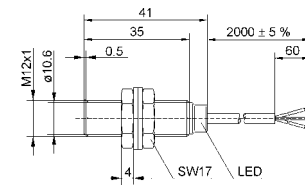
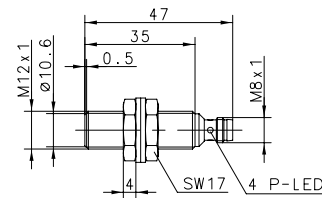
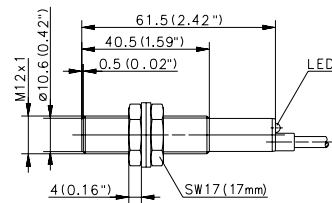
= IO-Link





Type	M12	M12	M12	M12
Enclosure material	CuZn39Pb3	CuZn39Pb3	CuZn39Pb3	CuZn39Pb3
Type of installation	flush	flush	flush	flush
Nominal sensing distance	2 mm	2 mm	4 mm	4 mm
Type of connection	Cable 2 m	Connector M8	Cable 2 m	Connector M8
Special feature	4000 Hz	Short type	Short type	
PNP	DC	NO contact	6502903012 KIB-M12PS/002-KL2F	6502943008 KIB-M12PS/002-KLSM8V
PNP	DC	NC contact		6532903003 KIB-M12PS/004-KL2EVI
NPN	DC	NO contact		6602343366 KIB-M12NS/004-KLSM8E
NPN	DC	NC contact		
Technical data				
Rated operating voltage range	U_B	10–60 VDC	10–30 VDC	10–30 VDC
Rated operating current	I_e	≤ 200 mA	≤ 200 mA	200 mA
Max. switching voltage	F	4000 Hz	800 Hz	800 Hz
Short circuit-protection		cyclic	cyclic	cyclic
Function/operating voltage indicator		LED/–	LED/–	LED/–
Mechanical data				
Ambient temperature (min/max)		–25°C/+70°C	–25°C/+70°C	–25°C/+70°C
Protection class in accordance with IEC 529, EN 60529		IP67	IP67	IP67
Connection		3 x 0.14 mm ²	M8 x 1	3 x 0.14 mm ²
Approvals				

= IO-Link

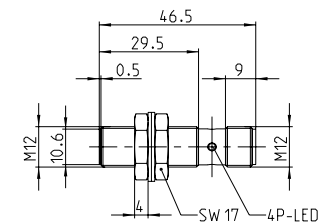
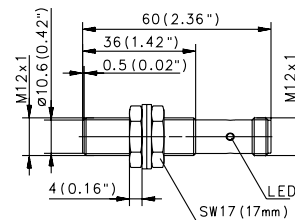
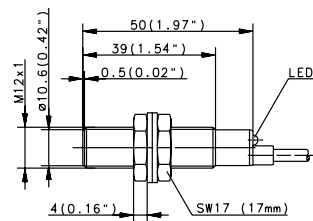


INDUCTIVE SENSORS Type M12



Type	M12	M12	M12
Enclosure material	CuZn39Pb3	CuZn39Pb3	CuZn39Pb3
Type of installation	flush	flush	flush
Nominal sensing distance	4 mm	4 mm	4 mm
Type of connection	Cable 2 m	Connector M12	Connector M12
Special feature	Sensing distance	Sensing distance	Sensing distance
PNP	DC	NO contact	6502903025 KIB-M12PS/004-KL2E
PNP	DC	NC contact	6502943015 KIB-M12PS/004-KLS12E
NPN	DC	NO contact	6532943004 KIB-M12PS/004-KLS12EVI
NPN	DC	NC contact	6602743764 KIB-M12PÖ/004-KLS12E
NPN	DC	NO contact	6602343869 KIB-M12NS/004-KLES12
NPN	DC	NC contact	
Technical data			
Rated operating voltage range	U_B	10–30 VDC	10–36 VDC
Rated operating current	I_e	≤ 200 mA	≤ 200 mA
Max. switching voltage	F	800 Hz	800 Hz
Short circuit-protection		cyclic	cyclic
Function/operating voltage indicator		LED/–	LED/–
Mechanical data			
Ambient temperature (min/max)		–25°C/+70°C	–25°C/+70°C
Protection class in accordance with IEC 529, EN 60529		IP67	IP67
Connection		3 x 0.14 mm ²	M12 x 1
Approvals			

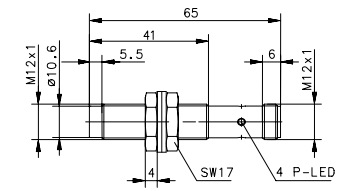
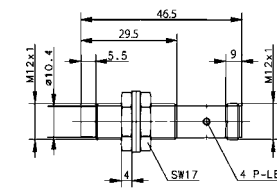
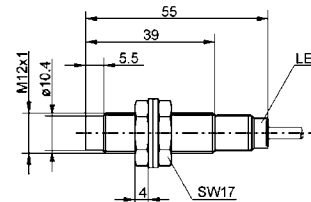
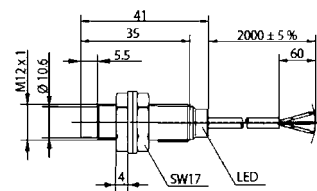
= IO-Link





Type	M12	M12	M12	M12		
Enclosure material	CuZn39Pb3	CuZn39Pb3	CuZn39Pb3	CuZn39Pb3		
Type of installation	non-flush	non-flush	non-flush	non-flush		
Nominal sensing distance	4 mm	4 mm	4 mm	4 mm		
Type of connection	Cable 2 m	Cable 2 m	Connector M12	Connector M12		
Special feature	Short type	Standard type	Short type	Standard type		
PNP	DC	NO contact	6532904001 KIN-M12PS/004-KL2VI	6532904002 KIN-M12PS/004-KL2I	6532944001 KIN-M12PS/004-KLS12VI	6532944002 KIN-M12PS/004-KLS12I
PNP	DC	NC contact	6532704001 KIN-M12PÖ/004-KL2VI	6532704002 KIN-M12PÖ/004-KL2I	6532744001 KIN-M12PÖ/004-KLS12VI	6532744002 KIN-M12PÖ/004-KLS12I
NPN	DC	NO contact	6532304001 KIN-M12NS/004-KL2V	6532304002 KIN-M12NS/004-KL2	6532344001 KIN-M12NS/004-KLS12V	6532344002 KIN-M12NS/004-KLS12
NPN	DC	NC contact	6532104001 KIN-M12NÖ/004-KL2V	6532104002 KIN-M12NÖ/004-KL2	6532144001 KIN-M12NÖ/004-KLS12V	6532144002 KIN-M12NÖ/004-KLS12
Technical data						
Rated operating voltage range	U_B	10–30 VDC	10–30 VDC	10–30 VDC	10–30 VDC	10–30 VDC
Rated operating current	I_e	≤ 200 mA	≤ 200 mA	≤ 200 mA	≤ 200 mA	≤ 200 mA
Max. switching voltage	F	400 Hz	400 Hz	400 Hz	400 Hz	400 Hz
Short circuit-protection		cyclic	cyclic	cyclic	cyclic	cyclic
Function/operating voltage indicator		LED/–	LED/–	LED/–	LED/–	LED/–
Mechanical data						
Ambient temperature (min/max)		–25°C/+70°C	–25°C/+70°C	–25°C/+70°C	–25°C/+70°C	–25°C/+70°C
Protection class in accordance with IEC 529, EN 60529		IP67	IP67	IP67	IP67	IP67
Connection		3 x 0.14 mm ²	3 x 0.14 mm ²	M12 x 1	M12 x 1	M12 x 1
Approvals						

= IO-Link



INDUCTIVE SENSORS Type M12



Type	M12	M12	M12	M12
Enclosure material	CuZn39Pb3	PA, red	CuZn39Pb3	CuZn39Pb3
Type of installation	non-flush	non-flush	non-flush	non-flush
Nominal sensing distance	4 mm	4 mm	8 mm	8 mm
Type of connection	Connector M8	Cable 2 m	Cable 2 m	Connector M12
Special feature	Short type		Sensing distance	Sensing distance
PNP	DC	NO contact	6502919001 KIN-T12PS/004-KL2	6502904021 KIN-M12PS/008-KL2E
PNP	DC	NC contact	6502744006 KIN-M12PÖ/004-KLSM8V	6502944013 KIN-M12PS/008-KLS12E
NPN	DC	NO contact		6602344458 KIN-M12NS/008-KLS12E
NPN	DC	NC contact		
Technical data				
Rated operating voltage range	U_B	10–36 VDC	10–30 VDC	10–36 VDC
Rated operating current	I_e	≤ 200 mA	≤ 200 mA	≤ 200 mA
Max. switching voltage	F	400 Hz	400 Hz	400 Hz
Short circuit-protection		cyclic	cyclic	cyclic
Function/operating voltage indicator		LED/–	LED/–	LED/–
Mechanical data				
Ambient temperature (min/max)		–25°C/+70°C	–25°C/+70°C	–25°C/+70°C
Protection class in accordance with IEC 529, EN 60529		IP67	IP67	IP67
Connection		M8 x 1	3 x 0.14 mm ²	3 x 0.14 mm ²
				M12 x 1

Approvals

